



Instantly Identify Multiple Circuits With True Color[™] EMT

New and improved True Color[™] EMT from Allied Tube & Conduit[™] is available in 8 vibrant colors and provides instant identification of multiple circuit systems.

Features & Benefits

- Hot galvanized steel using patented in-line Flo-Coat[®] process for long lasting exterior protection
- E-Z Pull[®] interior coating provides a smooth raceway for fast, easier wire-pulling
- Instant identification of multiple circuits
- Excellent mechanical protection for conductors
- Made in the USA
- Stocking all colors in ½" - 2"
- All colors in 2½" - 4" available by special order

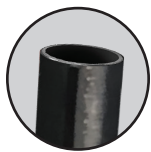
Enhancements

- Available in 8 fresh and vibrant colors
- No silver shine through and improved scratch resistance
- Robust packaging for paint surface protection
- Reduced bundle size for smaller orders



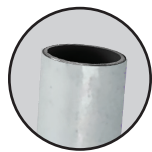
To learn more, visit alliedeg.us 

True Color™ Applications



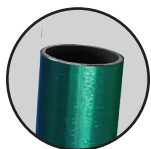
Black

- Blends in Dark Colored Areas
- Architecture



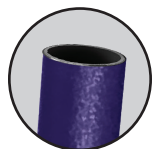
White

- Blends in Light Colored Areas
- Architecture



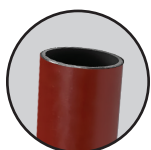
Green

- Hospital and Healthcare Areas
- Nurse Call Stations



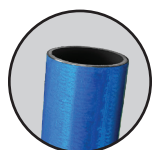
Purple

- Specialty Wiring Systems
- Security Systems



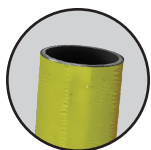
Fire Alarm

- Emergency Circuits
- Fire Alarm
- Security Systems



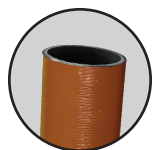
Blue

- Low Voltage Wiring
- Data Com / Video
- Network Security



Yellow

- High Voltage Wiring
- Caution Areas
- Special Equipment



Orange

- Construction /Research Areas
- Fiber-Optic Systems
- Auto Repair / Maintenance

Available Sizes

Trade Size		Outside Diameter		Normal Wall Thickness		Approximate Weight Per 100 ft (30.5m)		Bundle Quantity		Primary Bundle Quantity	
in	mm	in	mm	in	mm	lb	kg	ft	m	ft	m
½	16	0.706	17.93	0.042	1.07	30	13.6	2500	762.0	100	30.5
¾	21	0.922	23.42	0.049	1.24	46	20.9	2000	609.6	100	30.5
1	27	1.163	29.54	0.057	1.45	67	30.4	1000	304.8	100	30.5
1¼	35	1.510	38.35	0.065	1.65	101	45.8	500	152.4	50	15.2
1½	41	1.740	44.20	0.065	1.65	116	52.6	500	152.4	50	15.2
2	53	2.197	55.80	0.065	1.65	148	67.1	610	185.9	-	-
2½*	63	2.875	73.03	0.072	1.83	216	98.0	370	112.7	-	-
3*	78	3.500	88.90	0.072	1.83	263	119.3	200	61.0	-	-
3½*	91	4.000	101.60	0.083	2.11	349	158.3	100	30.5	-	-
4*	103	4.500	114.30	0.083	2.11	393	178.3	100	30.5	-	-

*2½" to 4" are special order in all colors
¹ +/- 0.005" (.13 mm) for trade sizes ½" to 2"

+/- 0.010" (.25 mm) for trade sizes 2½"
 +/- 0.015" (.38 mm) for trade sizes 3"

+/- 0.020" (.51 mm) for trade sizes 3½" & 4"
 Note: Length = 10ft (3.05m) +/- .25" (6.35mm)