

Split Couplings for Threaded Rigid Conduit & IMC

Features

- Use where conduit runs are closely spaced
- Use when conduit is tight against a wall, ceiling or other obstruction
- Neoprene gasket provides a concrete tight seal
- Concrete tight
- RoHS compliant

Standard Materials

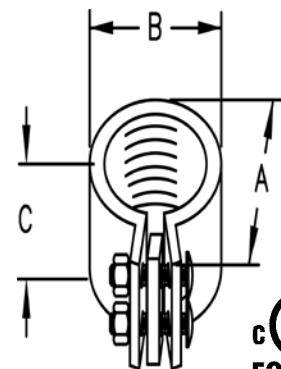
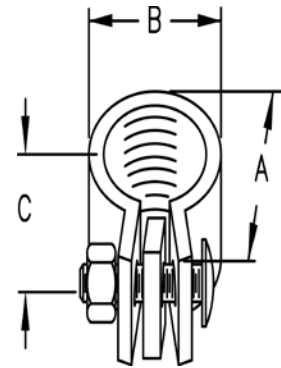
- Body: Malleable Iron / Ductile Iron
- Seal: rubber
- Screw: steel

Standard Finish

- Zinc plated

Applicable Third Party Standards

- UL Standard: 514B
- NEMA: FB-1
- UL Listed File # E207875



Catalog Number	Trade Size (in)	Dim A (in)	Dim B (in)	Dim C (in)	Inner Pack	Master Pack	Weight Per C (lb)
STC50KON	1/2	2.000	1.250	1.250	10	100	34.4
STC75KON	3/4	2.313	1.250	1.500	10	50	39.4
STC100KON	1	2.625	1.625	1.813	10	40	60.0
STC125KON	1 1/4	3.063	1.625	2.188	5	20	75.0
STC150KON*	1 1/2	3.313	1.938	2.438	5	20	112.5
STC200KON*	2	3.813	2.000	2.875	5	20	112.5
STC250KON*	2 1/2	4.625	3.063	3.563	-	2	275.0
STC300KON*	3	5.313	3.313	4.125	-	2	300.0
STC350KON*	3 1/2	6.063	3.250	4.813	-	1	425.0
STC400KON*	4	6.563	3.438	5.375	-	1	500.0
STC500KON*	5	8.063	3.875	6.563	-	1	900.0
STC600KON*	6	9.250	4.813	7.625	-	1	1300.0

*Furnished with 2 bolts