

## Miscellaneous Fittings

### Lay-in Grounding Lugs

#### Features

- Each lug takes a range of cable sizes
- Heavy-duty slotted or hex head screw
- Aluminum lay-in lugs are suitable for use with copper or aluminum conductors
- Copper lay-in lugs are suitable for use with copper or aluminum conductors

#### Standard Materials

- Aluminum or Copper

#### Standard Finish

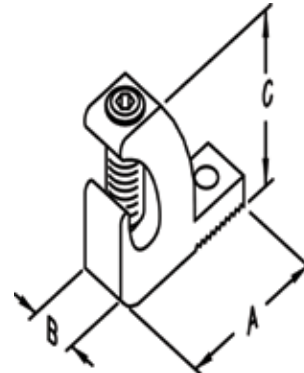
- Aluminum lug - Zinc plated
- Copper lug - Natural

#### Applicable Third Party Standards

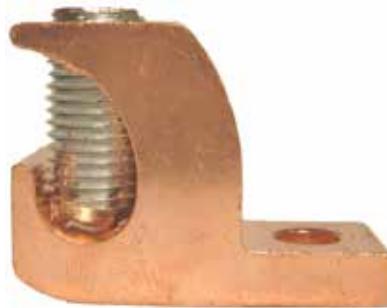
- UL Standard: 467
- Fed. Spec. A-A-50552
- NEMA: FB-1
- UL Listed File # E212551



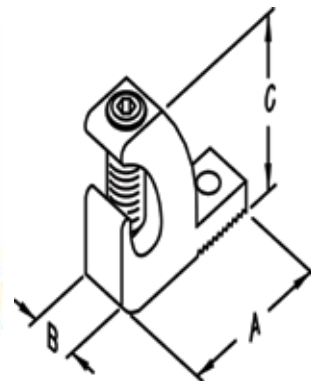
Aluminum Lugs



4/14AL and 1/0 - 8AL furnished with slotted screw. 3/0- 6AL and 250MCM- 6AL furnished with hex head screw



Copper Lugs



4/14CL and 1/0 - 8CL furnished with slotted screw. 3/0- 6CL and 250MCM- 6CL furnished with hex head screw



Catalog Number	Lug Size (in)	Dim A (in)	Dim B (in)	Dim C (in)	Master Pack	Weight Per C (lb)
<b>Aluminum Lugs</b>						
4/14ALKON	4-14	1.063	0.375	0.750	100	1.9
1/0-8ALKON	1/0-8	1.500	0.625	1.125	100	6.6
3/0-6ALKON	3/0-6	2.000	0.813	1.500	50	16.4
250MCM-6ALKON <sup>^</sup>	250MCM-6	2.188	0.813	1.688	50	18.8
<b>Copper Lugs</b>						
4/14CLKON	4-14	1.063	0.375	0.750	100	4.4
1/0-8CLKON	1/0-8	1.500	0.625	1.125	100	15.9
3/0-6CLKON	3/0-6	2.000	0.813	1.500	50	40.0
250MCM-6CLKON <sup>^</sup>	250MCM-6	2.188	0.813	1.688	50	50.3

<sup>^</sup> Not UL Certified

