

## 90 Degree, Liquidtight Fitting with Copper Grounding Lug

### Features

- Tapered threaded male hub - NPT
- Compact, slim diameter
- Steel locknut
- Liquidtight / Raintight / Oiltight / Concrete tight
- Suitable for wet locations
- Long ferrule prevents pullout and tight bend conduit pop-out
- RoHS compliant
- Use with Liquidtight Flexible Metal Conduit

### Standard Materials

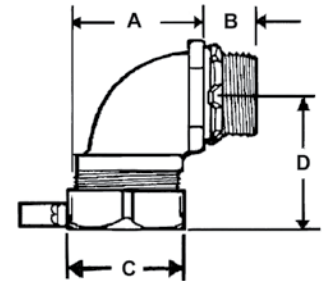
- Lug - Copper
- Malleable Iron
- Nylon
- Steel ferrule
- Steel locknut

### Standard Finish

- Zinc plated

### Applicable Third Party Standards

- UL Standard: 514B
- UL Standard: 467
- Fed. Spec. A-A-50553
- NEMA: FB-1
- Suitable for grounding in size 3/8" through 1 1/4" under NEC 350.60 and 250.118(6)
- Suitable for use in the following hazardous locations under NEC, Class I, Division 2; Class II, Division 1 and 2; and Class III, Division 1 and 2
- UL Listed File # E212551



Insulated



Catalog Number	Trade Size (in)	Lug Size (in)	Dim A (in)	Dim B (in)	Dim C (in)	Dim D (in)	Master Pack	Weight Per C (lb)
<b>90° Insulated</b>								
LT3890CL-ICKON	3/8	4-14	1.25	0.63	1.19	1.56	25	27.8
LT5090CL-ICKON	1/2	4-14	1.44	0.63	1.31	1.56	25	31.4
LT7590CL-ICKON	3/4	4-14	2.00	0.63	1.56	1.81	10	46.7
LT10090CL-ICKON	1	4-14	2.13	0.69	1.88	2.19	10	77.4
LT12590CL-ICKON	1 1/4	4-14	2.88	0.75	2.25	2.19	5	99.2
LT15090CL-ICKON	1 1/2	4-14	2.69	0.81	2.50	2.50	2	124.7
LT20090CL-ICKON	2	4-14	3.19	0.81	3.00	2.88	1	180.3
LT25090CL-ICKON	2 1/2	1/0-8	8.31	1.13	4.06	7.88	1	855.0
LT30090CL-ICKON	3	1/0-8	9.50	1.25	4.88	9.50	1	1255.8
LT35090CL-ICKON	3 1/2	3/0-6	11.44	1.25	5.44	11.88	1	1932.7
LT40090CL-ICKON	4	3/0-6	13.81	1.31	6.06	12.94	1	2422.5