

FLEX - AC - MC



Screw in Box Connector

Features

- Join flexible metal conduit to box
- Insulated

Standard Materials

- Zinc Die Cast
- Poly carbonate insuliner

Standard Finish

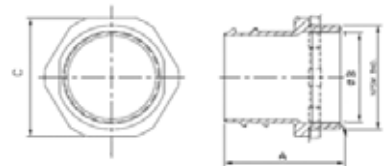
- Vibratory Finish

Applicable Third Party Standards

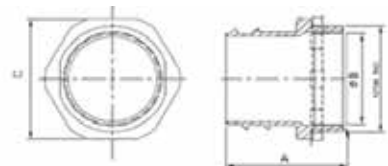
- UL Standard: 514B
- UL Listed File E207875
- RoHS



Non-Insulated



Insulated



Catalog Number	Trade Size (in)	Dim A (in)	Dim B (in)	Dim C (in)	Inner Pack	Master Pack	Weight Per C (lb)
Non-Insulated							
GFCD50KON	½	1.28	0.63	0.92	50	500	5.5
GFCD75KON	¾	1.5	0.81	1.18	30	300	8.4
GFCD100KON	1	1.87	1.02	1.40	15	150	15.4
GFCD125KON	1¼	2.13	1.36	1.74	10	100	24.0
GFCD150KON	1½	2.32	1.61	2.11	5	50	35.0
GFCD200KON	2	2.48	2.05	2.66	3	30	53.8
Insulated							
GFCD50-ICKON	½	1.32	0.56	0.92	50	500	5.5
GFCD75-ICKON	¾	1.54	0.73	1.18	30	300	8.6
GFCD100-ICKON	1	1.93	0.93	1.40	15	150	15.6
GFCD125-ICKON	1¼	2.20	1.24	1.74	10	100	24.9
GFCD150-ICKON	1½	2.40	1.48	2.11	5	50	35.9
GFCD200-ICKON	2	2.56	1.89	2.66	3	30	62.7